



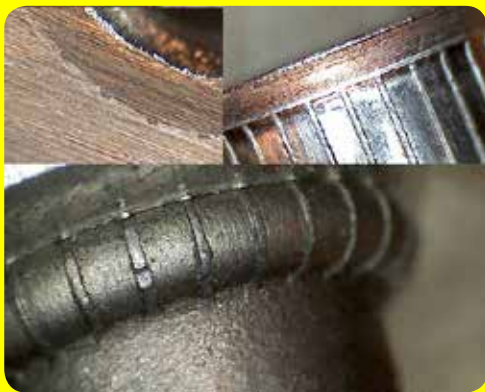
Tubtara® with improved knurls

Nominal, knurled shank
 Flat or low profile head
 Open or closed end
 Steel, stainless steel 304 & 316

UPO & UKO KN

improved
 nominal knurls

Tubtara® with improved knurl design and nominal diameter



Comparison of torque-to-turn reference values* with
 Steel M6 UKO 30, low profile head and smooth shank:

Steel M6 UKO 30 KN	low profile head, improved knurl	+ 15 %
Steel M6 UPO 30	flat head, smooth shank	+ 30 %
Steel M6 UPO 30 KN	flat head, improved knurl	+ 45%
Steel M6 ATO 30	anti-turn head, round shank	+ 100%
Steel M6 HUPO 30	flat head, hexagonal shank	+ >300%

* All Tubtara's set in a 1,5 mm thick steel HRB 55 plate
 Real values depending on setting conditions

● Benefits

Ensuring increased torque-to-turn resistance, resulting in up to **15% higher Nm** values compared to smooth shank parts (values depending on material choice & geometry)

● Design

- KN knurls are optimal in size and number to bite into soft (some aluminium grades) and even in hard (steel and stainless steel) base material
- contrary to the splined RS, the KN Tubtara has a nominal shank diameter
- the UKO KN version makes flush installation possible
- UFO KN programme in progress (knurls on shank and under the head)

● Samples

For detailed product offer: see [pg 14](#), [pg 15](#), [pg 43](#) and [pg 44](#)

Samples of stainless M5 UFO35 KN available on request



How to order or inquire: Please prefix the TUBTARA order code with 'R852-' example: R852-513550