

# Quick Fitting

## **Parker Legris connectic**

products are available from

### **MARYLAND METRICS**

P.O. Box 261 Owings Mills, MD 21117 USA

ph: (410)358-3130 (800)638-1830

fx: (410)358-3142 (800)872-9329

email: sales@mdmetric.com web: <http://mdmetric.com>

RFQ form: <http://mdmetric.com/rfq.htm>



## Save Time and Space

while improving reliability

### Save Time During Assembly

- No thread to machine in your housing
- No risk of faulty assembly
- Possibility of having different tube diameters for only one cavity diameter
- No risk of losing the seal: one-piece fitting
- Instant connection and disconnection of the tubing

### Save Space on your Devices

- Flexibility of choice for the fitting's shape (tee, elbow, diameter 4 or 6, for example)
- Closer mounting tolerances and shallow cavities

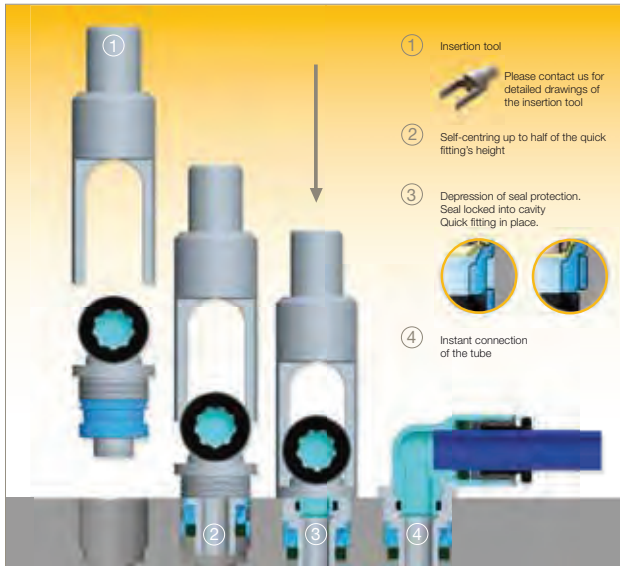
### Superior Product Quality

- Individual unit quality control and dating in order to guarantee quality and traceability
- Protection against contaminants (dust, etc.) throughout production and assembly
- Vacuum capability



ENGINEERING YOUR SUCCESS.

# Assembly

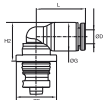


## > Assembly Steps :



# Range

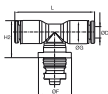
## 3089 90° elbow quick fitting



	ØD (mm)	Cavity (mm)	F (mm)	G (mm)	H2 (mm)	L (mm)	
3089 04 04	4	4	12,5	9	11,5	15	0,004
3089 04 06	4	6	12,5	9	10,5	15	0,005
3089 06 04	6	4	12,5	11	14	17	0,005
3089 06 06	6	6	12,5	11	12,5	17	0,006
3089 06 08	6	8	14,5	11	13	17	0,010
3089 08 08	8	8	14,5	13,5	16	23	0,011
3089 08 10	8	10	19	13,5	16	23	0,022
3089 10 10	10	10	19	16	19	26,5	0,017
3089 10 12	10	12	20	16	19	26,5	0,028
3089 12 12	12	12	20	19	22	31	0,031

50 fittings / box - available on stock

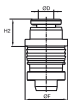
## 3088 Branch tee quick fitting



	ØD (mm)	Cavity (mm)	F (mm)	G (mm)	H2 (mm)	L (mm)	
3088 04 04	4	4	12,5	9	14	30	0,005
3088 04 06	4	6	12,5	8,6	12,5	29,5	0,006
3088 06 06	6	6	12,5	11	14,5	34	0,007
3088 06 08	6	8	14,5	10,6	14,7	33,5	0,011
3088 08 08	8	8	14,5	14	19	46	0,013
3088 08 10	8	10	19	14	19	46	0,024
3088 10 10	10	10	19	16	21	53	0,020
3088 10 12	10	12	20	16	21	53	0,031
3088 12 12	12	12	20	19	24	61	0,036

50 fittings / box - available on stock

## 3086 Reducer quick fitting



	ØD (mm)	Cavity (mm)	F (mm)	H2 (mm)	
3086 04 06	4	6	12,5	7	0,005
3086 06 08	6	8	14	7,5	0,008

Available upon request

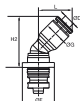
## 3082 Extended elbow quick fitting



	ØD (mm)	Cavity (mm)	F (mm)	G (mm)	H2 (mm)	L (mm)	
3082 04 04	4	4	12,5	9	16	15	0,006
3082 04 06	4	6	12,5	9	15	15	0,009
3082 06 06	6	6	12,5	11	23,1	19	0,010
3082 06 08	6	8	14,2	10,5	29,25	18,5	0,014
3082 08 08	8	8	17	13,5	29,5	22,5	0,021
3082 08 10	8	10	18,8	13,5	28,65	22,6	0,025
3082 10 10	10	10	20,2	16	33	26	0,029
3082 10 12	10	12	20,2	16	33	26	0,040
3082 12 12	12	12	23,2	19	39	31	0,056

Available upon request

## 3081 45° elbow quick fitting

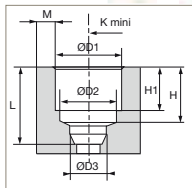


	ØD (mm)	Cavity (mm)	F (mm)	G (mm)	H2 (mm)	L (mm)	
3081 04 04	4	4	12,5	9	19	13	0,004
3081 06 06	6	6	12,5	11	22	14,5	0,006
3081 08 08	8	8	14,5	13,5	26	19	0,011
3081 10 10	10	10	19	16	30	22	0,017
3081 12 12	12	12	20	19	35,5	26	0,031

Available upon request

# Cavity Dimensions

## > Cavity dimensions for 90° elbow, 45° elbow, branch tee, reducer quick fittings



Please contact us for detailed drawings of cavity dimensions and tolerances.

### Nylon Cavity (mm)

Cavity	ØD1	ØD2	ØD3	H	H1	K mini	L	M
4	8,25	7,05	4,1	8,15	6	12,3	10	1,5
6	10,21	9,1	6,1	9,65	7,5	12,3	12	2
8	12,15	10,85	8,15	12,45	9,9	14,3	15,5	2
10	14,8	13,2	10,15	14,35	11,7	19	19	2
12	17,5	15,5	12,17	16,75	13,9	20,2	22	2,5

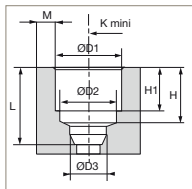
### Aluminium Cavity (mm)

Cavity	ØD1	ØD2	ØD3	H	H1	K mini	L	M
4	8,3	7,05	4,1	8,15	6	12,3	10	1,5
6	10,3	9,1	6,1	9,65	7,5	12,3	12	2
8	12,25	10,85	8,15	12,45	9,9	15,2	15,5	2
10	15,08	13,2	10,15	14,35	11,7	19	19	2
12	17,7	15,5	12,17	16,75	13,9	20,2	22	2,5

### Brass Cavity (mm)

Cavity	ØD1	ØD2	ØD3	H	H1	K mini	L	M
4	8,3	7,05	4,1	8,15	6	12,3	10	1,5
6	10,3	9,1	6,1	9,65	7,5	12,3	12	2
8	12,25	10,85	8,15	12,45	9,9	14,3	15,5	2
10	15,08	13,2	10,15	14,35	11,7	19	19	2
12	17,7	15,5	12,17	16,75	13,9	20,2	22	2,5

## > Cavity dimensions for extended elbow quick fittings



Please contact us for detailed drawings of cavity dimensions and tolerances.

### Nylon Cavity (mm)

Cavity	Tube	ØD1	ØD2	ØD3	H	H1	K mini	L	M
4	4	8,25	7,05	4,1	8,15	6	12,3	10	1,5
6	4	10,21	9,1	6,1	9,65	7,5	12,3	12	2
6	6	10,21	9,1	6,1	9,65	7,5	14,2	12	2
8	6	12,15	10,85	8,15	12,45	9,9	14,3	15,5	2
8	8	12,15	10,85	8,15	12,45	9,9	17,1	15,5	2
10	8	14,8	13,2	10,15	14,35	11,7	19	19	2
10	10	14,8	13,2	10,15	14,35	11,7	20,3	19	2
12	10	17,5	15,5	12,17	16,75	13,9	20,3	22	2,5
12	12	17,5	15,5	12,17	16,75	13,9	23,3	22	2,5

### Aluminium Cavity (mm)

Cavity	Tube	ØD1	ØD2	ØD3	H	H1	K mini	L	M
4	4	8,3	7,05	4,1	8,15	6	12,3	10	1,5
6	4	10,3	9,1	6,1	9,65	7,5	12,3	12	2
6	6	10,3	9,1	6,1	9,65	7,5	14,2	12	2
8	6	12,25	10,85	8,15	12,45	9,9	14,3	15,5	2
8	8	12,25	10,85	8,15	12,45	9,9	17,1	15,5	2
10	8	15,08	13,2	10,15	14,35	11,7	19	19	2
10	10	15,08	13,2	10,15	14,35	11,7	20,3	19	2
12	10	17,7	15,5	12,17	16,75	13,9	20,3	22	2,5
12	12	17,7	15,5	12,17	16,75	13,9	23,3	22	2,5

### Brass Cavity (mm)

Cavity	Tube	ØD1	ØD2	ØD3	H	H1	K mini	L	M
4	4	8,3	7,05	4,1	8,15	6	12,3	10	1,5
6	4	10,3	9,1	6,1	9,65	7,5	12,3	12	2
6	6	10,3	9,1	6,1	9,65	7,5	14,2	12	2
8	6	12,25	10,85	8,15	12,45	9,9	14,3	15,5	2
8	8	12,25	10,85	8,15	12,45	9,9	17,1	15,5	2
10	8	15,08	13,2	10,15	14,35	11,7	19	19	2
10	10	15,08	13,2	10,15	14,35	11,7	20,3	19	2
12	10	17,7	15,5	12,17	16,75	13,9	20,3	22	2,5
12	12	17,7	15,5	12,17	16,75	13,9	23,3	22	2,5

# Conditions of Use

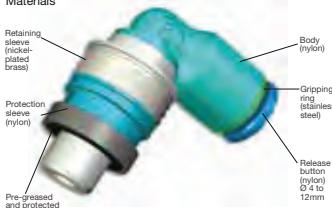
## > Applications

The quick fitting is useful on control valves, manifolds or cylinders in the following applications :

- Industrial automation solutions
- Textile
- Transportation
- Packaging
- Food industry (non-food zone)
- Vacuum industry
- Medical equipment
- Electronics



## > Technical conditions of use

<b>Materials</b> 	<b>Working Fluid</b>	Compressed air
	<b>Working Pressure</b>	0 to 20 bar
	<b>Working Temperature</b>	-20°C to 80°C
	<b>Vacuum</b>	99% (750mmHg)

## > Force required for insertion

Ø Tube	Nylon Cavity	Aluminium Cavity	Brass Cavity
4	300 daN	300 daN	300 daN
6	300 daN	300 daN	300 daN
8	300 daN	350 daN	300 daN
10	300 daN	300 daN	300 daN
12	400 daN	400 daN	400 daN

# Related Products



## > Tubing

### 1025P Close tolerance semi-rigid nylon tubing, 25 m rolls

o.d. tube (mm)	i.d. tube (mm)	minimum bend radius for tube in mm	Color Options								Cartridge	
			clear	black	green	red	blue	yellow	grey	cartridge		
3	1,8	8	1025P03 01 18									0,020
4	2	25	1025P04 00	1025P04 01	1025P04 02	1025P04 03	1025P03 04 18	1025P04 05	1025P04 06			0,318
4	2,7	30	1025P04 00 27	1025P04 01 27	1025P04 02 27	1025P04 03 27	1025P04 04 27	1025P04 05 27	1025P04 06 27			0,254
5	3,3	25	1025P05 00 33	1025P05 01 33								0,420
6	4	35	1025P06 00	1025P06 01	1025P06 02	1025P06 03	1025P06 04	1025P06 05	1025P06 06			0,535
8	6	55	1025P08 00	1025P08 01	1025P08 02	1025P08 03	1025P08 04	1025P08 05	1025P08 06			0,748
10	7,5	75	1025P10 00 75	1025P10 01 75								1,135
10	8	90	1025P10 00	1025P10 01	1025P10 02	1025P10 03	1025P10 04	1025P10 05	1025P10 06			0,989
12	9	75	1025P12 00 09	1025P12 01 09								1,769
12	10	90	1025P12 00	1025P12 01			1025P12 04					1,345

Also available in 100 m rolls.

### 1025U Flexible polyester polyurethane tubing, 25 m rolls

o.d. tube (mm)	i.d. tube (mm)	minimum bend radius for tube in mm	Color Options						Cartridge
			black	green	red	blue	yellow	grey	
3	1,8	8	1025U03 01 18						0,020
4	2,5	10	1025U04 01	1025U04 02	1025U04 03	1025U04 04	1025U04 05	1025U04 06	0,310
5	3	13	1025U05 01						0,522
6	4	15	1025U06 01	1025U06 02	1025U06 03	1025U06 04	1025U06 05	1025U06 06	0,591
8	5,5	20	1025U08 01	1025U08 02	1025U08 03	1025U08 04	1025U08 05	1025U08 06	0,971
10	7	25	1025U10 01	1025U10 02		1025U10 04	1025U10 05	1025U10 06	1,467
12	8	35	1025U12 01	1025U12 02		1025U12 04	1025U12 05	1025U12 06	2,406

Also available in 100 m rolls.

## > Carstick® Cartridge



The Carstick® concept combines LF3000 one-piece cartridges with a specially designed protection and dispensing sleeve. Ideal for continuous processes in large quantities, it provides a high performance solution for automatic, semi-automatic and manual assembly equipment for pneumatic components.

The quick fittings and the Carstick® fittings have the same cavity dimensions.

### Cartridge



ØD	L	H2
4	8,1	10
6	10,1	11,5
8	13	15
10	15,5	17
12	19,5	19,5

### 3100 Carstick® Plastic Case



ØD Cartridge	G	L
4	3100 04 00	554
6	3100 06 00	629
8	3100 08 00	794
10	3100 10 00	930
12	3100 12 00	1038

50 cartridges per Carstick® plastic case