

MEDWAY®

How to order: Please prefix the MEDWAY part number with 'R609-' example: R609-183044



MISCELLANEOUS PRODUCTS

MEDWAY (UK) LIMITED

products are available from

MARYLAND METRICS

P.O. Box 261 Owings Mills, MD 21117 USA

ph: (410)358-3130 (800)638-1830 fx: (410)358-3142 (800)872-9329

web: <http://mdmetric.com> email: sales@mdmetric.com

RFQ form: <http://mdmetric.com/rfq.htm>

MEDWAY (UK) LIMITED
M.P.T. HOUSE BRUNSWICK ROAD
COBBS WOOD INDUSTRIAL ESTATE
ASHFORD KENT TN23 1EL U.K.

BALL STUDS |

PAGE 1

Description

Ball studs are available in 3 different series that can be interchanged with corresponding ball joints, hardened threaded, burnished threaded and hardened riveting. Specials can be produced to suit customers requirements so please enquire for any item not shown.

Materials

Ball stud: Steel 212A42 case hardened & Zinc plated white & blue passivate (silver/clear)

Features

Metric & imperial thread sizes
Coarse & fine threads
Interchangeable with ball joints
Burnished ball for smooth operation

Possible Applications

Light to medium industrial/mechanical applications
Construction equipment
Agricultural equipment
Industrial equipment

Temperature Range

-40°C to +170°C

Specification

ELV & RoHS compliant



DUST SEALS | RDS - RDSS

PAGE 3

Description

Dust seals and spacers are available to suit standard rod ends and will give extra protection when used in harsh environments. In certain atmospheres condensation may occur and be trapped inside of the seal, therefore increasing the risk of corrosion therefore it is essential to use a suitable grease able to withstand water, a recommended grease is Shell Alvania no 2 or equivalent.

Material Specifications

Dust seal: Neoprene
Spacer: Steel 230M07PB Zinc plated white & blue passivate (silver/clear)

Features

To suit both metric & imperial rod end bearings

Possible Applications

All rod end bearing applications

Temperature Range

-30°C to +120°C

Specification

ELV & RoHS compliant



NUTS |

PAGE 4

Description

Nuts are available in both grade 4 & grade 8 in full and half width sizes, they are used on many of our linkage assemblies to secure rod ends, ball joints and clevis joints into place.

Material Specifications

Nut: Steel grade 4 & grade 8 Zinc plated white & blue passivate (silver/clear)

Features

Metric & imperial sizes
Full and half width sizes

Possible Applications

All rod end bearing applications
All linkage assembly applications

Temperature Range

-30°C to +120°C

Specification

ELV & RoHS compliant



WASHERS |

PAGE 7

Description

Washers are available in both metric and imperial sizes, they are used on many of our linkage assemblies to help secure rod ends, ball joints and clevis joints into place.

Materials

Washer: Steel 230M07PB Zinc plated white & blue passivate (silver/clear)

Features

Metric & imperial sizes

Possible Applications

All rod end bearing applications
All linkage assembly applications

Temperature Range

-30°C to +120°C

Specification

ELV & RoHS compliant



NOTES |

All Metric ball studs are based on DIN 71803 and all imperial ball studs are based on SAE J 490.

40% of our total production is purpose made to suit individual customer requirements, therefore please do not hesitate to contact us for any item not shown or if you have a specific application, our engineering team are available to help you.

All of the above catalogue ball studs are ELV & RoHS compliant and are Zinc plated with white & blue passivate (Silver/Clear) specification suffix "F39" unless otherwise stated to give a surface protection of 96 hours salt spray, other plating options are available but may not be ELV & RoHS compliant, please refer to our "Plating Options" section for full details and availability.

Every care has been taken to ensure the accuracy of the information contained in the following pages of this publication. No liability can be accepted for any loss or damage whether direct or indirect or consequential arising out of the use of the information contained herein. The stated load rating and design options are provided as an indication only and customers should test the suitability of all products to their own satisfaction, applications vary immensely therefore samples are available for this purpose.

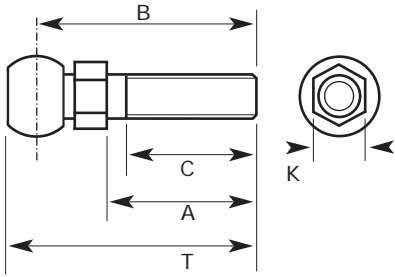
BALL STUDS THREADED - SERIES HARDENED

Materials

Stud: Hardened 212A42, Zinc plated white & blue passivate (silver / clear).

Specification

ELV & RoHS Compliant.



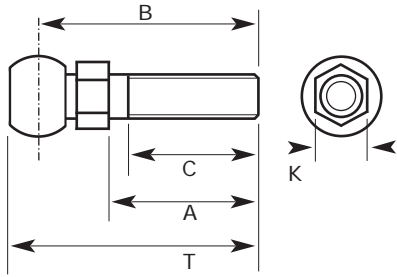
METRIC

PART NO. RIGHT HAND	BALL DIA.	STUD THREAD	A	B	C	K	T	BALL TYPE
M2662	8	M5/0.80	10.2	19.2	6.2	7	22.7	TYPE A
M2667	10	M6/1.00	12.5	23.5	8.5	8	28.0	TYPE A
M2671	13	M8/1.25	16.5	29.5	11.2	11	35.0	TYPE A
M2675	16	M10/1.50	20.0	26.0	12.7	13	43.0	TYPE A
M2679	16	M12/1.75	20.0	26.0	12.7	13	43.0	TYPE A
M2683	19	M14/1.50	28.0	48.0	17.2	16	56.5	TYPE A
M2687	19	M14/2.00	28.0	48.0	17.2	16	56.5	TYPE A

IMPERIAL

PART NO. RIGHT HAND	BALL DIA.	STUD THREAD	A	B	C	K	T	BALL TYPE
M1059C	0.251	10 - 32 UNF	0.437	0.824	0.360	0.312	0.927	TYPE A
M1688	0.251	10 - 32 UNF	0.437	0.874	0.360	0.312	0.965	TYPE A
M1158	0.348	1/4 - 28 UNF	0.562	1.015	0.460	0.375	1.166	TYPE A
M1059	0.251	1/4 - 28 UNF	0.562	0.949	0.480	0.312	1.052	TYPE A
M1247	0.310	1/4 - 28 UNF	0.562	1.011	0.480	0.375	1.141	TYPE B
M2262	0.304	1/4 - 28 UNF	0.562	1.030	0.468	0.375	1.156	TYPE C
M1205	0.406	5/16 - 24 UNF	0.687	1.218	0.600	0.437	1.375	TYPE A
M1240	0.311	5/16 - 24 UNF	0.562	1.046	0.500	0.437	1.172	TYPE A
M1187	0.340	5/16 - 24 UNF	0.687	1.234	0.620	0.437	1.375	TYPE B
M2263	0.343	5/16 - 24 UNF	0.687	1.218	0.593	0.437	1.343	TYPE C
M1171	0.489	3/8 - 24 UNF	0.875	1.516	0.780	0.500	1.719	TYPE A
M1333	0.422	3/8 - 24 UNF	0.875	1.522	0.780	0.500	1.687	TYPE B
M2264	0.416	3/8 - 24 UNF	0.875	1.562	0.781	0.500	1.722	TYPE C
M2265	0.554	1/2 - 20 UNF	1.125	2.000	1.000	0.625	2.230	TYPE C

BALL STUDS THREADED - SERIES BURNISHED



Materials

Stud: Steel, Burnished

Specification

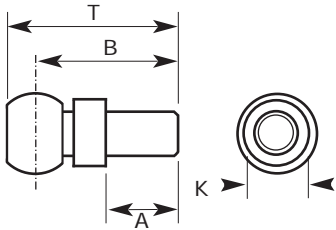
ELV & RoHS Compliant.



METRIC

PART NO. RIGHT HAND	BALL DIA.	STUD THREAD	A	B	C	K	T	BALL TYPE
M3228	8	M5/0.80	10.2	19.2	7.5	7	22.7	TYPE A
M1331	10	M6/1.00	12.5	23.5	10.0	8	28.0	TYPE A
M2598	13	M8/1.25	16.5	29.5	13.5	11	35.0	TYPE A
M1244	16	M10/1.50	20.0	26.0	15.0	13	43.0	TYPE A
M2683	19	M14/1.50	28.0	48.0	17.2	16	56.5	TYPE A

BALL STUDS RIVETTING - SERIES HARDENED



Materials

Stud: Hardened 212A42 Steel, Zinc plated white & blue passivate (silver/clear).

Specification

ELV & RoHS Compliant.



METRIC

PART NO. RIGHT HAND	D1	D2	D3	L1	L2	L3	T	RECOMMENDED HOLE SIZE
M2691	5	8	8	16.5	9	4.0	16.5	5.000 / 5.075
M2692	5	8	8	20.0	9	7.5	20.0	5.000 / 5.075
M2693	6	10	10	19.5	11	4.5	19.5	6.000 / 6.075
M2694	6	10	10	23.0	11	8.0	23.0	6.000 / 6.075
M2695	8	13	13	23.0	13	5.0	23.0	8.000 / 8.090
M2696	8	13	13	28.0	13	10.0	28.0	8.000 / 8.090
M2697	10	16	16	28.5	16	6.0	28.5	10.000 / 10.090
M2698	10	16	16	35.5	16	13.0	35.5	10.000 / 10.090
M2699	14	19	19	40.5	20	12.0	40.5	14.000 / 14.110
M2700	14	19	19	46.5	20	18.0	46.5	14.000 / 14.110

RUBBER DUST SEALS & SPACERS

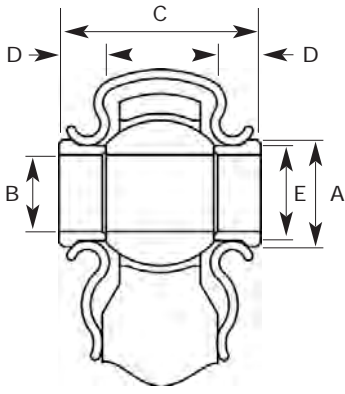
Materials

Seal: Neoprene Rubber

Collar: 230M07PB, Zinc plated white & blue passivate (silver / clear).

Specification

ELV & RoHS Compliant.



DUST SEALS

PART NO.	TO SUIT ROD END BORE SIZES				
RDS-04	6mm	8mm	1/4"	5/16"	
RDS-06	10mm	3/8"	7/16"		
RDS-08	12mm	14mm	1/2"	5/8"	
RDS-12	16mm	18mm	20mm	22mm	3/4"

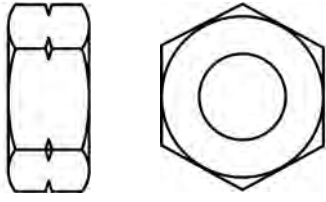
METRIC (SPACERS)

PART NO.	BORE SIZE	A	B	C	D	E
RDSS-M06	6	10	6	21	6	8.5
RDSS-M08	8	12	8	24	6	10.0
RDSS-M10	10	14	10	26	6	12.5
RDSS-M12	12	18	12	28	6	15.0
RDSS-M14	14	20	14	35	8	16.5
RDSS-M16	16	22	16	37	8	19.0
RDSS-M18	18	24	18	39	8	21.0
RDSS-M20	20	26	20	41	8	24.0
RDSS-M22	22	28	22	44	8	25.5

IMPERIAL (SPACERS)

PART NO.	BORE SIZE	A	B	C	D	E
RDSS-04	1/4	0.437	0.250	0.875	0.250	0.343
RDSS-05	5/16	0.500	0.312	0.937	0.250	0.437
RDSS-06	3/8	0.562	0.375	1.000	0.250	0.500
RDSS-07	7/16	0.625	0.437	1.062	0.250	0.562
RDSS-08	1/2	0.750	0.500	1.250	0.312	0.656
RDSS-10	5/8	0.875	0.625	1.375	0.312	0.781
RDSS-12	3/4	1.000	0.750	1.500	0.312	0.906

NUTS STANDARD



Materials

Nut: Steel, Grade 4, Zinc plated white & blue passivate (silver / clear).

Specification

ELV & RoHS Compliant.



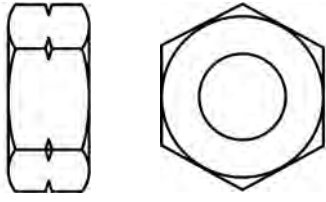
METRIC (GRADE 4)

PART NO. RIGHT HAND	PART NO. LEFT HAND	THREAD	TYPE
M7000	M7001	M4 X 0.70	FULL
M7002	M7003	M4 X 0.70	THIN
M7007	M7008	M5 X 0.80	FULL
M7009	M7010	M5 X 0.80	THIN
M7014	M7015	M6 X 1.00	FULL
M7016	M7017	M6 X 1.00	THIN
M7025	M7026	M8 X 1.25	FULL
M7027	M7028	M8 X 1.25	THIN
M7033	M7034	M10 X 1.50	FULL
M7035	M7036	M10 X 1.50	THIN
M7040	M7041	M12 X 1.75	FULL
M7042	M7043	M12 X 1.75	THIN

IMPERIAL (GRADE 4)

PART NO. RIGHT HAND	PART NO. LEFT HAND	THREAD	TYPE
M7050	M7051	10-32 UNF	FULL
M7060	M7061	1/4 UNF	FULL
M7062	M7063	1/4 UNF	THIN
M7070	M7071	5/16 UNF	FULL
M7072	M7073	5/16 UNF	THIN
M7080	M7081	3/8 UNF	FULL
M7082	M7083	3/8 UNF	THIN
M7090		7/16 UNF	FULL
M7092		7/16 UNF	THIN

NUTS STANDARD



Materials

Nut: Steel, Grade 8, Zinc plated white & blue passivate (silver / clear).

Specification

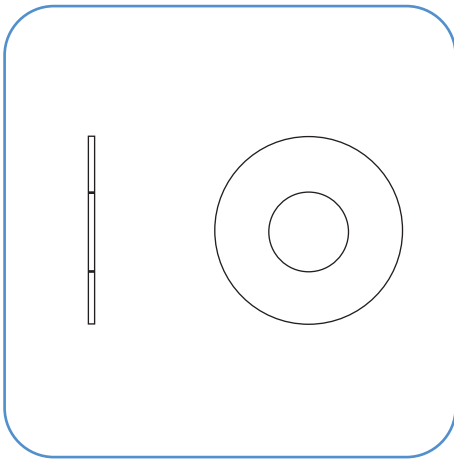
ELV & RoHS Compliant.



METRIC (GRADE 8)

PART NO. RIGHT HAND	PART NO. LEFT HAND	THREAD	TYPE
M7814	M7815	M6 X 1.00	FULL
M7825	M7826	M8 X 1.25	FULL
M7827	M7828	M8 X 1.25	THIN
M7833	M7834	M10 X 1.50	FULL
M7835	M7836	M10 X 1.50	THIN
M7840	M7841	M12 X 1.75	FULL
M7842		M12 X 1.75	THIN

PLAIN WASHERS STANDARD



Materials

Washer: Steel.

Specification

ELV & RoHS Compliant.



METRIC

PART NO.	WASHER TYPE	OUTSIDE DIAMETER	INSIDE DIAMETER	THICKNESS
M7100	BS4320 T1 Plain Washer	10	5.3	1.0
M7111	Special Plain Washer	17	8.4	1.6
M7112	DIN 125 Form B Plain Washer	24	13.0	1.6
M7113	Special Plain Washer	30	17.0	2.0
M7114	Special Plain Washer	21	8.4	1.6
M7117	Special Plain Washer	33	21.0	2.5

IMPERIAL

PART NO.	WASHER TYPE	OUTSIDE DIAMETER	INSIDE DIAMETER	THICKNESS
M7101	Plain Washer	0.442 / 0.432	0.268 / 0.263	0.032
M7102	Plain Washer	0.510 / 0.490	0.332 / 0.327	0.032
M7116	Plain Washer	0.625 / 0.615	0.332 / 0.327	0.072
M7103	Plain Washer	0.580 / 0.555	0.415 / 0.410	0.032
M7104	Plain Washer	0.753 / 0.743	0.514 / 0.512	0.039
M7105	Plain Washer	1.250 / 1.240	0.656 / 0.651	0.072
M7106	Plain Washer	1.375 / 1.365	0.656 / 0.651	0.072
M7107	Plain Washer	1.625 / 1.615	0.656 / 0.651	0.128
M7108	Plain Washer	2.000 / 1.990	0.656 / 0.651	0.128
M7109	Plain Washer	0.875 / 0.870	0.395 / 0.390	0.072
M7110	Plain Washer	1.500 / 1.480	0.333 / 0.328	0.057

How to order: Please prefix the MEDWAY part number with 'R609-' example: R609-183044

MEDWAY (UK) LIMITED

products are available from

MARYLAND METRICS

P.O. Box 261 Owings Mills, MD 21117 USA

ph: (410)358-3130 (800)638-1830 fx: (410)358-3142 (800)872-9329

web: <http://mdmetric.com> email: sales@mdmetric.com

RFQ form: <http://mdmetric.com/rfq.htm>

MEDWAY (UK) LIMITED
M.P.T. HOUSE BRUNSWICK ROAD
COBBS WOOD INDUSTRIAL ESTATE
ASHFORD KENT TN23 1EL U.K.